

General

| | |
|----------------|--------------------------------------|
| Type | Fixed Wall Light |
| Mounting | Wall Recessed |
| IP-Rating | IP20 |
| Construction | Diecast Aluminium |
| Operating Temp | -10°c to +40°c |
| Protection | Class 2 |
| Certification | CE (EN 60598-1) |
| Warranty | 3 years (refer to warranty document) |

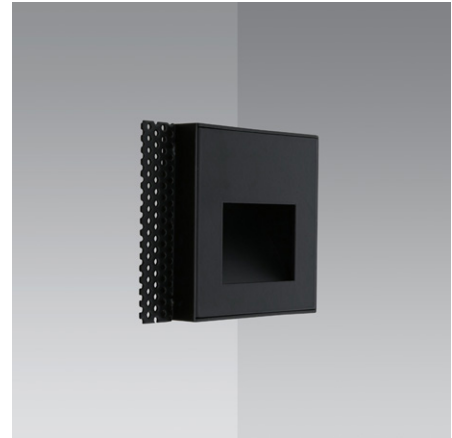


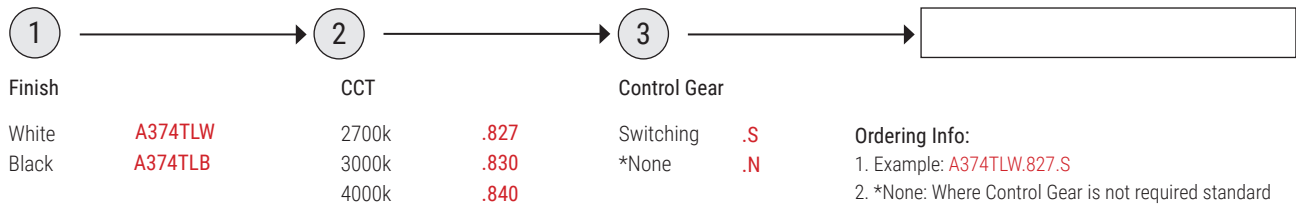
Image shows Marker_A TL for reference purposes only > refer to technical drawing on Page 02 for actual dimensions

LED (SMD)

| | |
|---------------|--|
| Power Output | 3w |
| CCT | 2700k 3000k 4000k |
| *Lumen Output | 120 lm |
| CRI | 80 (90 on request) |
| Optics | Asymmetric (PC Diffuser) |
| Lifetime | 30,000h (B80, L10) |
| Control Gear | Remote Driver (12vDC Constant Voltage) |

Specification

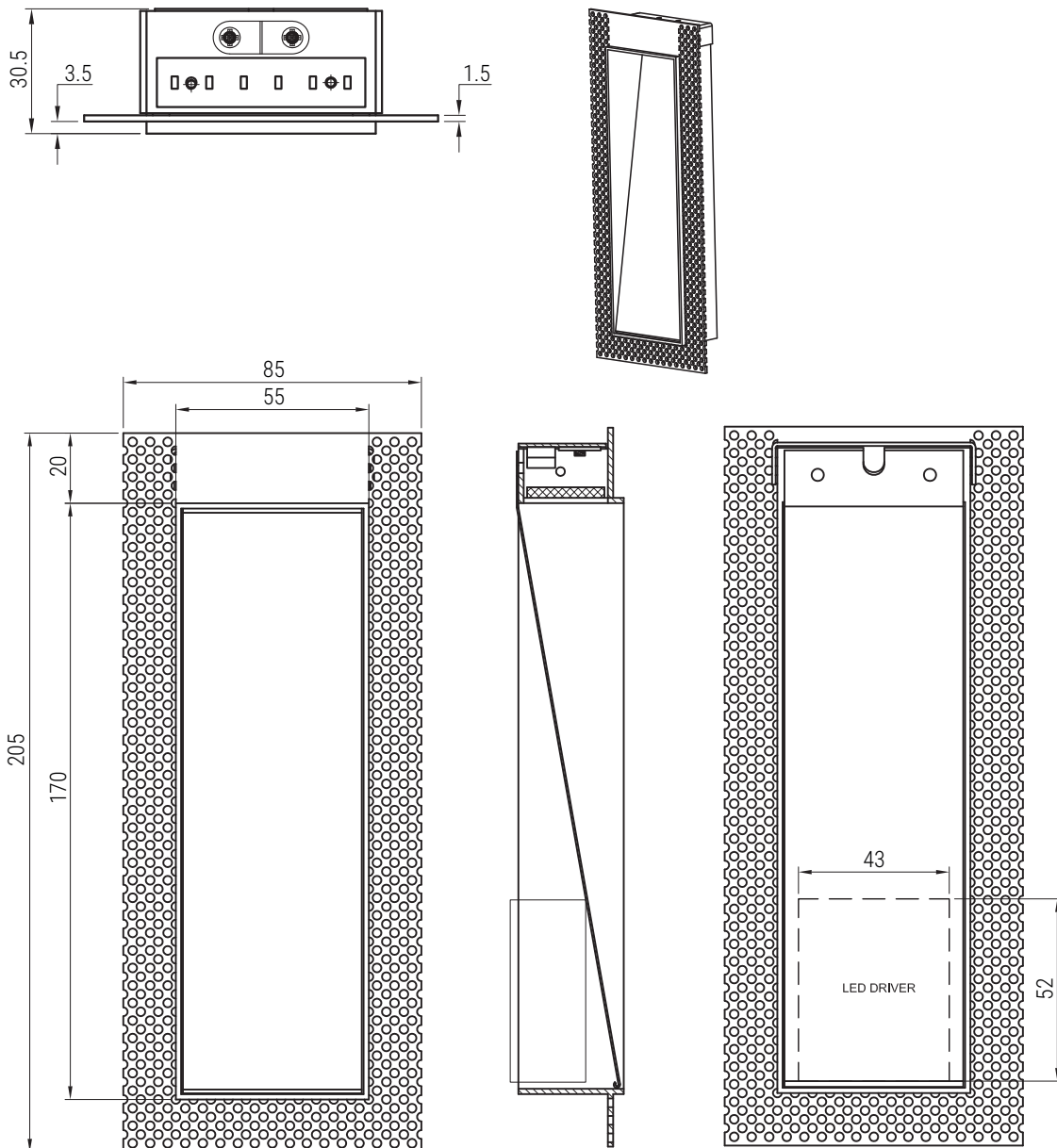
Order Code:



Ordering Info:

1. Example: **A374TLW.827.S**
2. *None: Where Control Gear is not required standard warranty terms will not apply (see warranty document)
3. Driver can be integrated on request
4. Multiple fixtures can be connected to one driver if wired in parallel > contact us for technical details

Technical Drawings (mm)



LED Notes

- 1.*Lumen Output - for fixtures with a recessed baffle / snoot / frosted lens the lumen output may be lower than the stated figures - contact us for the latest .ies file(s) to ensure accuracy of data
2. LED Engine / LED COB use only 3-step MacAdam Ellipse LEDs, tested @ 25°C
3. Control Gear (by others) is subject to both specification and availability
4. LED Engine / LED COB - Lumen output is $\pm 7\%$ / CCT tolerance is $\pm 150k$
5. Operating Voltage: 220 - 240v, 50/60 Hz
6. Subject to technical changes without notice

Fixture Notes

1. GU10/MR16 Lamps - Fixture height may vary according to the sizes stated by the respective Lamp manufacturer
2. Technical Drawings - tolerance of $\pm 1mm$ applies to all stated dimensions
3. Suitable for Plasterboard Ceilings (thickness: 9mm - 30mm), unless stated otherwise
4. Custom RAL finishes are available on request (may be subject to MOQ)
5. Standard finishes are Powder-coated White (RAL 9003) and Black (RAL 9005)
6. For Panel (MDF, etc) and Concrete applications pls contact us with details of the Project requirements