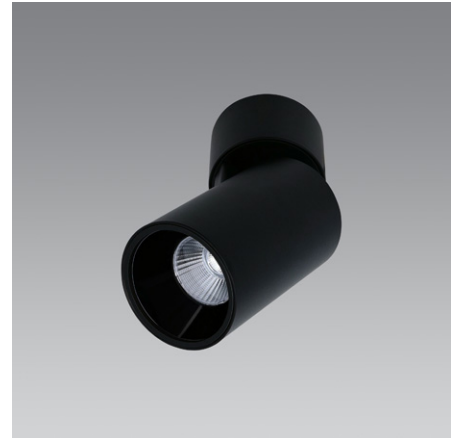


## General

Type	Adjustable Spotlight
Mounting	Ceiling Surface
IP-Rating	IP20
Construction	Diecast Aluminium
Operating Temp	-10°c to +40°c
Protection	Class 2
Certification	CE (EN 60598-1)
Warranty	5 years (refer to warranty document)



## LED COB @ 3000k

Power Output	12.2w
Beam	18°    23°    36°
*Lumen Output	1321 lm    1360 lm    1372 lm
CRI	80 (90 on request)
Lifetime	50,000h (B80, L10)
Control Gear	Remote Driver
Drive Current	350mA
Forward Voltage	35v

2700k / 4000k - data on request

## Specification

Order Code:

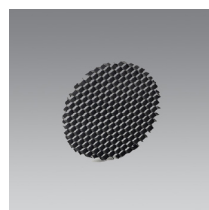


Finish	LED COB	Control Gear
White/Black Reflector	<b>A383WBR</b> 2700k / 18° beam	Phase-cut <b>.P</b>
White/Polished Reflector	<b>A383WPR</b> 2700k / 23° beam	1-10v <b>.A</b>
White/Satin Reflector	<b>A383WSR</b> 2700k / 36° beam	DALI <b>.D</b>
White/Copper Reflector	<b>A383WCR</b> 3000k / 18° beam	Switching <b>.S</b>
Black/Black Reflector	<b>A383BBR</b> 3000k / 23° beam	*None <b>.N</b>
Black/Polished Reflector	<b>A383BPR</b> 3000k / 36° beam	
Black/Satin Reflector	<b>A383BSR</b> 4000k / 18° beam	
Black/Copper Reflector	<b>A383BCR</b> 4000k / 23° beam	
	4000k / 36° beam	

### Ordering Info:

- Example: **A383BBR.827.36.P**
- \*None: Where Control Gear is not required standard warranty terms will not apply (see warranty document)
- Add-ons: Include Add-on Code(s) after Order Code - more than one Add-on can be specified

## Add-ons

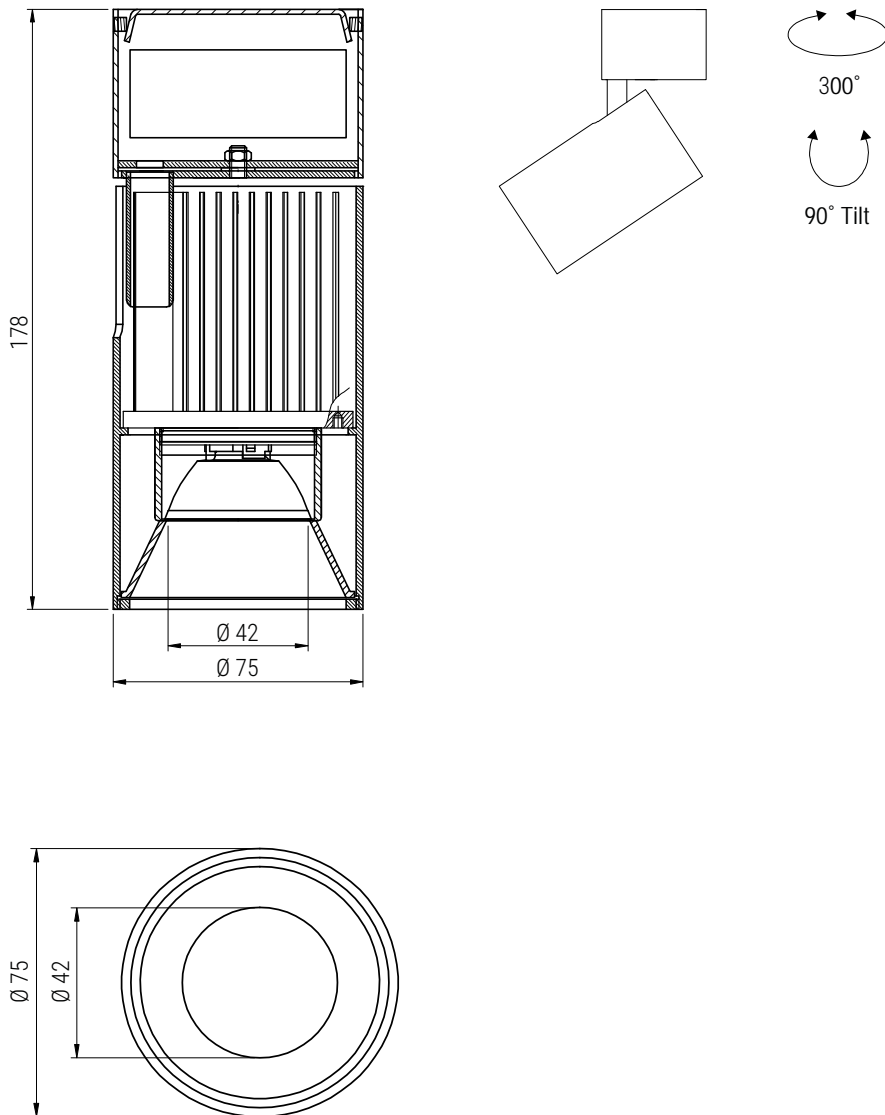


Honeycomb Filter / **.HC**



Frosted Lens / **.FL**

Technical Drawings (mm)



LED Notes

- 1.\*Lumen Output - for fixtures with a recessed baffle / snoot / frosted lens the lumen output may be lower than the stated figures - contact us for the latest .ies file(s) to ensure accuracy of data
2. LED Engine / LED COB use only 3-step MacAdam Ellipse LEDs, tested @ 25°C
3. Control Gear (by others) is subject to both specification and availability
4. LED Engine / LED COB - Lumen output is ±7% / CCT tolerance is ±150k
5. Operating Voltage: 220 - 240v, 50/60 Hz
6. Subject to technical changes without notice

Fixture Notes

1. GU10/MR16 Lamps - Fixture height may vary according to the sizes stated by the respective Lamp manufacturer
2. Technical Drawings - tolerance of ± 1mm applies to all stated dimensions
3. Suitable for Plasterboard Ceilings (thickness: 9mm - 30mm), unless stated otherwise
4. Custom RAL finishes are available on request (may be subject to MOQ)
5. Standard finishes are Powder-coated White (RAL 9003) and Black (RAL 9005)
6. For Panel (MDF, etc) and Concrete applications pls contact us with details of the Project requirements